



198
years of
manufacturing
history



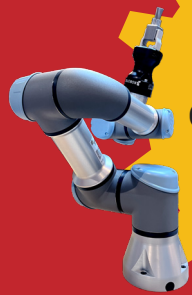
Granite Bed Lathe from 1825

Over
40
historic
machines
on display



Bridgeport Serial #1

Over
8
examples of
modern
machines



Universal Robot

Over
50
generous
corporate
donors

Who We Are

The American Precision Museum is a **non-profit museum** that provides visitors with a unique experience as they step back in time into an **1846 brick armory building**. Discover the story of the three founders who **boldly refined a process of manufacturing** that is used globally today. Make your way through the **evolution of machine tools** until arriving back in today's manufacturing industry to see **modern machines in action**. We provide a space for dialogue with yesterday and showcase the achievements of modern manufacturing as we **inspire the innovators of tomorrow**.



What We Do

- Welcome **5,000 visitors** from all over the world into our museum every year
- Distribute **STEM Kits** focused on different **precision manufacturing principles**, at no cost, to schools in need of access to STEM education
- **Preserve** our historical collection to share the story of the **industrial heritage** of early America
- **Educate** people about the evolution of manufacturing technology using our immersive **historical experience and modern machines**.



“The American Precision Museum is a powerful reminder of American ingenuity and the birthplace of the idea of interchangeable parts.”

Richard Kline, *Chairman and CEO, Gardner Business Media, APM Board Member and Corporate Member*

“With the investments that are being made at APM, I believe we can make a difference in educating the future young people to seek out a career in manufacturing.”

Larry Schwartz, *Former President and COO, Okuma America Corporation, APM Board Member*

How You Can Help

Corporate Memberships are essential to everything we do at the American Precision Museum. Memberships help us care for our collection, hire talented staff, keep the museum lit and heated, and support our thriving programs. We have three robust levels for our Corporate Memberships. All of our Corporate Members have their logo on the donor wall in the museum, online on our Partners page, and in our Annual Report.

Leader \$5000+

Free Admission for all Employees
3 Manufacturing Ledger Entries
A feature in our e-newsletter
Use of the APM building for private events

Partner \$1000+

Free Admission for all Employees
2 Manufacturing Ledger Entries
A feature in our e-newsletter

Patron \$250+

3 Free Guest Passes
1 Manufacturing Ledger Entry

Become a Member

americanprecision.org/corporate



Donate online or mail a check to PO BOX 679
Windsor, VT 05089

Our Community of Corporate Members

- **Abbott Workholding**
- ABLE Machine Tool Sales Inc.
- Advance Welding
- Allied Chucker and Engineering Company
- ARCH Cutting Tools
- **Association for Manufacturing Technology**
- Belt Technologies
- Bradford Machine
- Butler Bros.
- C. Thorrez Industries, Inc.
- **Caron Engineering**
- Coastal Safety
- Concept Components Inc.
- CPH Manufacturing
- **Daniel Defense**
- Datanomix
- Emuge-Franken
- G & W Machinery Sales
- **Gardner Business Media, Inc.**
- Geokon, Inc.
- Global Shop Solutions
- **Gosiger Automation**
- **HAAS Automation**
- Hammond Roto-Finish
- Hannes Precision Industry Inc.
- Harvey Performance Company
- **Headwater Precision**
- **Heidenhain**
- HORST Engineering
- Ingersoll
- **Lake Machine Company Inc.**
- **Lexair**
- LockNLube
- Machine Metrics
- MacLean-Fogg Company
- **Mastercam**
- **Mazak Corporation**
- Meyer Gage Company
- Microbest Inc.
- **Midaco Corporation**
- Moore Tool Company
- **Morris Group, Inc.**
- **National Tooling & Machining Association**
- **Okuma America Corporation**
- Pilot Precision Products
- Predator Software, Inc.
- **PTR Industries**
- **Royal Products**
- **Savage Arms, Inc.**
- Schutte Corporation
- Southern Gear & Machine, Inc.
- **L. S. Starrett**
- Sturm, Ruger & Co.
- Tri-Angle Metal Fab
- Turpin Sales & Marketing
- Westminster Tool, Inc.